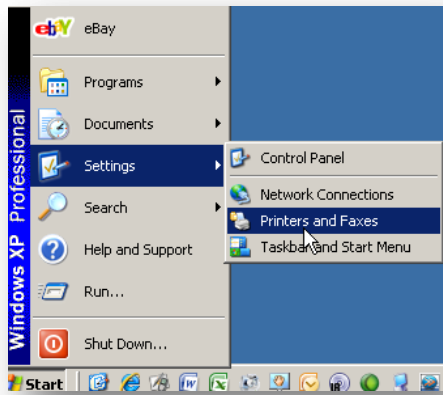
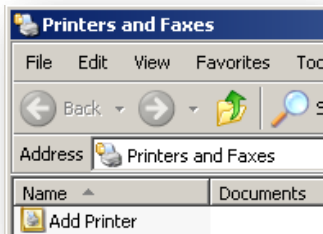


Adding a printer

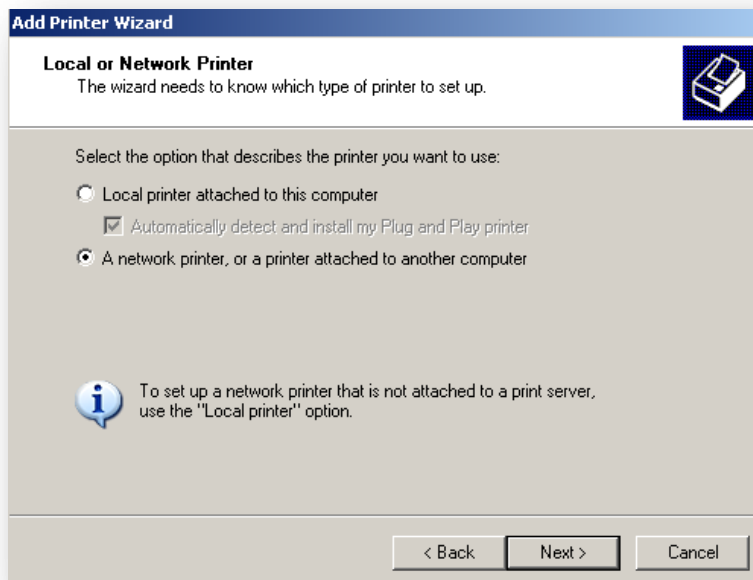
1. Start→Settings→Printers and Faxes



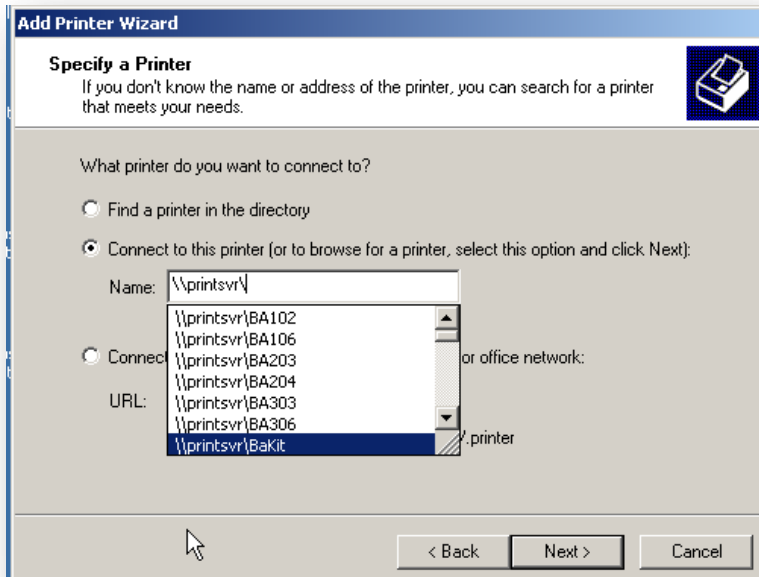
2. From the list, choose **Add Printer**; double-click



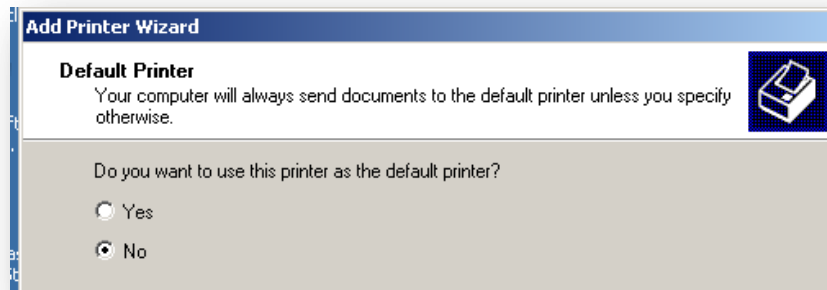
3. In the Wizard that opens, click Next. Then choose the radio button in front of **Add network printer or printer attached to another computer**. Click **Next**



4. Choose the radio button in front **Connect to this printer(or to browse for a printer, select this option and click Next)** and type in `\\printsvr\` to view a dropdown menu of network printers. (If a dropdown doesn't appear, type in the printer name.) **Choose the printer** you want from the list and click **Next**



5. Choose the radio button next to **No**, unless you want this to be your default printer. Click **Next**



6. Click **Finish**. Now the printer you chose will appear as an option when you print a document.

